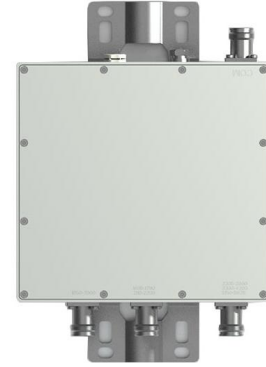


Triple band Combiner Triplexer

1850-2000/1695-1780&2110-2200/2305-2690&3300-4200&5150-5925 MHz

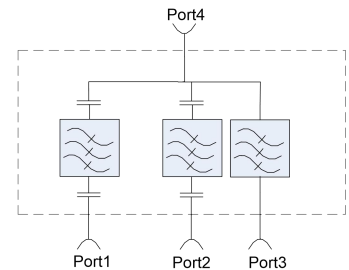
- Designed for co-siting purposes
- Enables feeder sharing
- Suitable for indoor or outdoor applications
- Wall or mast mounting
- Available as a single unit, or for XPol antennas as a double unit
- Extremely small dimensions and low weight
- Very low insertion loss
- High input power



Specifications :

Part No.	9508012550	
Electrical		
Frequency range (MHz)	Port1	1850-2000
	Port2	1695-1780&2110-2200
	Port3	2305-2690&3300-4200&5150-5925
Insertion loss (dB)	≤0.7	
Isolation(dB)	≥35	
Return loss/VSWR	≤-18dB/1.3	
Intermodulation (dBc)	≤-160 (with 2×20W)	
Impedance (Ω)	50 Ω	
Input power (W)	≤200 W(avg.)	
Environmental		
Operation temperature	-20°C to +65 °C	
Storage temperature	-40 °C to +85 °C	
Relative humidity	5% - 95%	
Application	Indoor or outdoor (IP65)	
Mechanical		
Weight	Single	3Kg
	Double	6Kg
Dimensions(WxHxD)(mm) without mounting brackets	Single	192*183*45.5
	Double	192*183*99.5
RF Connectors	4.3-10 Female	

Schematic diagram :



Outline drawing :

