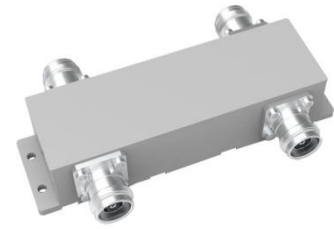


500-4000MHz 4.3-10 Female Low PIM 3dB 2 IN 2 OUT Hybrid Coupler

- Strip-line and air-dielectric design
- Wide band frequency 500-4000MHz
- High isolation and good VSWR
- Low PIM



Specifications :

Part No.	HT-HC22-0540-4F
Operating Frequency (MHz)	500-4000
Impedance (Ohm)	50
VSWR	1.25
Coupling (dB)	3
Insertion Loss (dB)	±1
Isolation (dB)	24
IM3 (dBc @ 2×43dBm)	-160
Application	Indoor & Outdoor
Degree of Protection	IP65
Operating Temperature (C)	-40 ~ + 80
Interface	4.3-10 Female
Handling Power (Watt, max)	500
Peak Power (Watt, max)	1500
Dimension (mm)(L×W×H, excl connector)	140.6×44×36.5
Net Weight (g)	715±5%

Outline Drawing :

